

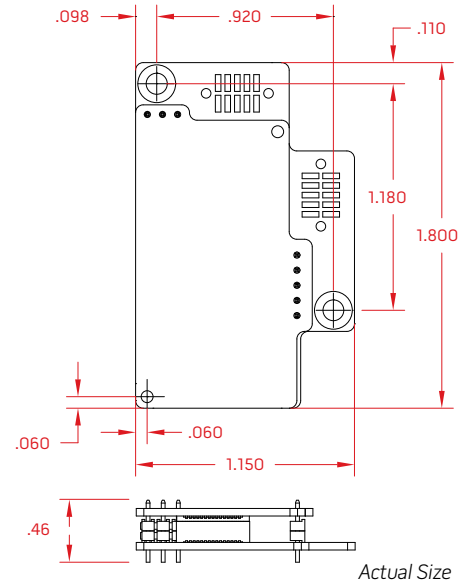
MS-2040 Double Stack

Masimo SET® OEM Board

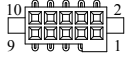
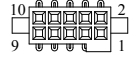
DIMENSIONS

Dimensions	Typical
Width	1.15 inch
Length	1.80 inch
Stack Height	0.46 inch
Mounting Hole	0.110 inch
Top Height	0.100 inch
Bottom Height	0.100 inch

BOARD OUTLINE – TOP VIEW



CONNECTOR DATA

Connector Description	Power and Communications Connector	Sensor Connector
Number of Pins	10	10
Configuration	2 rows of 5	2 rows of 5
Angle	Vertical	Vertical
Pin Grid	0.050 inch	0.050 inch
Manufacturer Part #	Samtec SFM-105-02-S-D-A 	Samtec SFM-105-02-S-D-A 

DC POWER REQUIREMENTS

	Typical	Maximum
Input Voltage	+3.3V	±5%
Line/Load Regulation		0.2% rms
Avg. Power	< 45 mW	150 mW

SERIAL INTERFACE

Baud Rate (fixed)	9600 bps
-------------------	----------